

3 days to grab your Sovereign Performance. Walk your life with Purpose and Simplicity, Softly allow every "now" to count!

[Paula Teixeira](#)

CEO HUMAN Value LEGACY® Institute - Human Performance Vault A-Z - Expanding Capabilities for Quantum Processing Capacity & Capabilities - Learning Regenerative System - Development of Higher Capabilities - Growth
August 4, 2025

Grab your Sovereign Human Performance Power & Direct your Personal Fulfilment

Each Individual has its unique **Human Performance infrastructure** capability filled with potentiality embedded in the **DNA**.

Human life starts in a warmth womb of a Woman which is naturally engrained with a combination of 2 Individuals DNA's (Masculine + Feminine) carried by a sacred life force for the global development of a Human Being, it's Growth & Development sequencing.

No one has received a luggage of Legacy with the same "ingredients in it" with regards of their Human Performance Potentiality and the desired level of Fulfilment.

Each individual has a Human Structure and its unique set of functioning, our Nervous System, Brain Connectivity and physicality is diverse.

We have been growing up in an Educational, Social, Economic, Political system, craving to put us in "standards".

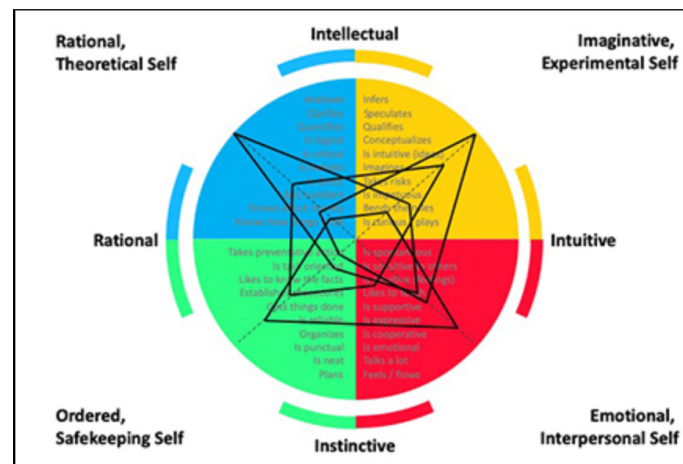
However, **each of us is UNIQUE** and has the Right to be treated and respected in their uniqueness.

Let's have a look of our brain capabilities potential, I discovered the whole brain model in 2007 and realised the power of all the overall Lean Enterprise Methodology Tools.

Inclusive of Hoshin Kanri dedicated to developing strategic competitive capabilities and develop talent, all of tools are infused with the "why, what, how, when, who, where, how much" questions that will automatically make each individual to shine in their light and succeed despite its the brain pattern and, in doing so, fulfils and nourish individuality in each performance power.

My craftsmanship for the past 23 years has been to develop and support each individual in their specific performance journey by creating successful unique tailor-made performance tools

helping them to achieve the required performance excellence, yet some temporary (to sustain a learning phase), others in the longterm progress.



Whole Brain Model

At that time I had a whole brain capability with a big kite in the Creative Imaginative part going out of the circle.

What about you, do you know **how your brain is functioning?** Do you know what is fulfilling you?

I feel fulfilled by creating things that do not exist yet, new solutions, new processes, new knowledge, new capabilities, new connectivity, new consciousness and I feel fulfilled internally.

It is visceral to understand what fulfils you, doing what? With whom? Nourishing your own **Human Performance Sovereignty**.

Now, was I born like that or did I developed through the years of managing change, transformation, innovation, driving higher capabilities in Business Performance using the Hoshin Kanri tools?

It doesn't really matter, we all know that at any age we are able to stretch our brain plasticity, improve and direct your power and achieve your goals, personal and professional and fulfil your purpose.

Now, let's talk about **Growth, Creativity, Improvement** and **Innovation** regarding the areas of our brain.

Improving something is related to what is already existing through a processes, standards, solve problems.

Innovation requires to do some **design thinking**, some creativity.

But Creativity can be a left and right brain activity.

However **evolutionary Growth** requires Creativity using the right brain area, it is a Strategic skill.

It implies to use **Higher levels of the Mind**, let's call the Higher Mind for simplicity reasons. We connect into that Quantum field of not yet existence future with a Purpose.

Our regular mind operates out of past situations, previous fears and limited knowingness and it reverberates the energy of our now.

Becoming an expert **Strategist requires to sharp the Intuitive Intelligence**, it is in the driver sit and directs your Intellectual, Instinctive, Rationale and Emotional Intelligences in your performance.

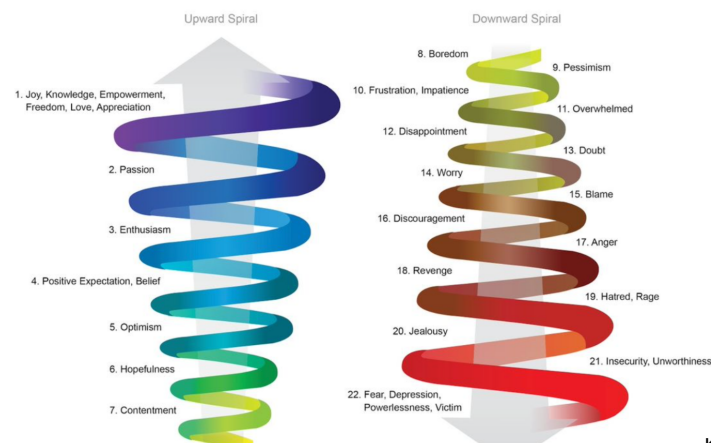
The Growth Journey requires to leave the comfort zone, understand and own the fear zone, sharp your Learning Mechanics, get new tools and proceed with full steam to the Growth Zone.



The Growth Journey

The Growth Journey is a trajectory filled with a **spiral of emotions**, you constantly navigate through downward and upward feelings, so one must know how to emotionally regulate in face of any endeavor appearing in the way.

Emotional Guidance Scale:



Be **conscious** that using artificial intelligence remaining maintain you in the comfort zone, sort of abdicating your creative power and not using your Human Natural Creative Forces to Elevate Human Experience.

Artificial Intelligence does not use the "whole brain" areas for Creation and by consequent, the "level of consciousness" remains the same during the Orchestration phase.

Human "Laziness" or transfer of power is being a true loss for our Humanness.

Getting out of our comfort zone, engages our **Emotional Regulation** skills & tools.

The accelerated fast paced change potentially triggers something unexpected in our Pandora's box of Legacy received from our ancestors, or simply epigenetic unconsciously, past imprints built up by us and it can be a constant roller coaster of both spirals during our daily endeavours.

Although we cannot control the emotion, we can control the time that emotion goes through our slate.

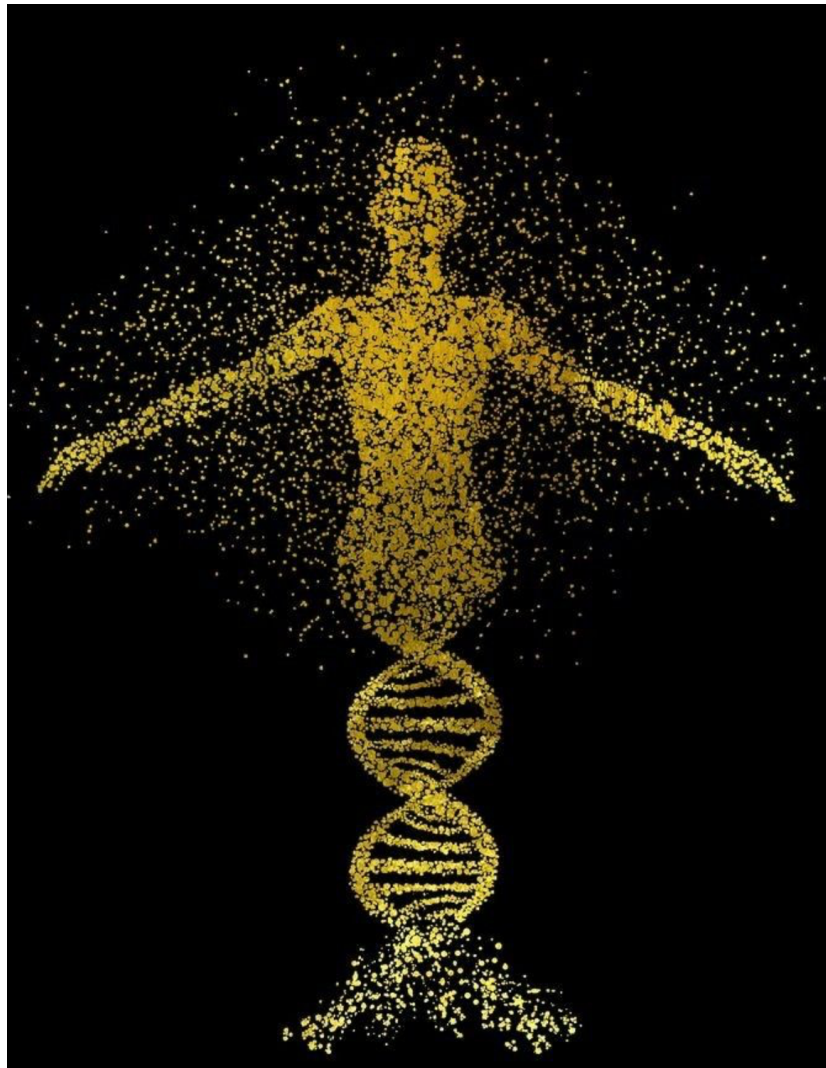
Another major ingredient in your Human Performance must be Known-Nourished-Upgraded to Progress (KNUP), it is your **Belief System**.



A belief pattern is encapsulated in every creation

Growth is supported by upleveling conscious Beliefs systems as they form our experience and manifestation.

You cannot create something that is not supported by your belief and if you manage to create, the progress will not be solid at all, won't sustain your trajectory in the long run.



No matter your current biological age, whatever generation you belong, if you do want to start to grasp higher levels of Creativity and develop deeper levels of Growth, **you must revise, upgrade and balance your Individual "hardware, memory bank and your processor" of information with the ability to properly "percept" the information in the Quantum Field.**

In other words, within your internal **Human Performance Slate and Equipment** you must expand its capabilities and capacity for Quantum processing abilities.

You also must **cleanse your "perceptors"** tools for value.

The fastest simplified and fulfilling way to grab your Sovereign Human Performance Power and direct your personal intentions for Growth with success is by Regenerating your human performance slate all the way back to its beginning, your received Legacy.

Make a **breakthrough** engaging a **paradigm shift** direction of it by Pulling your life from an intentional brand new desired Legacy to transfer & share with the world.

Recall what makes you unique and different, what makes you authentically you, how you contribute that back to the collective, which gifts do you want to powerfully bring forward.

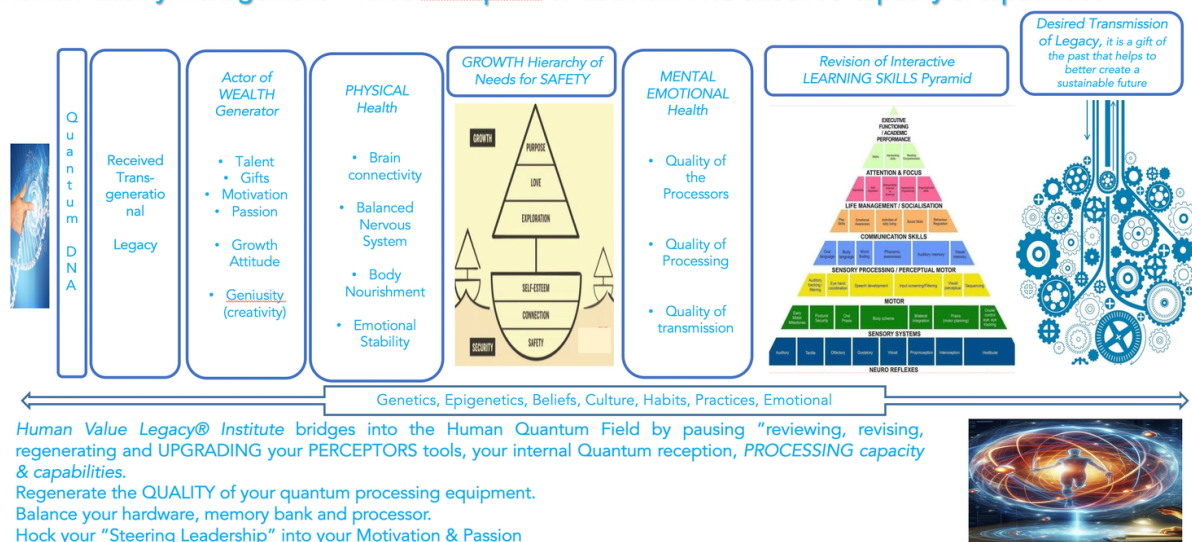
Human KNUP Summit coming up on the 8th, 9th, 10th in Geneva Switzerland, is a unique opportunity for you to do that.

If you are serious about starting the fall with a brand new Human Performance Equipment and want to experience a life regeneration, join us

Science of Human Value Legacy® Institute

Quantum Human Performance Vault A-Z

Human Quality Management – Value Perceptors & Quantum PROCESSING capacity & capabilities



Paula Teixeira - Privacy Policy – HVL® - © 2011- 2025 C&O Value S.r.l. All rights reserved

Human Value Legacy Institute Quantum Performance Vault A-Z

- 1 day dedicated to **weave your own Human KNUP** (Know Nourish Upgrade Progress) **Elevating in Human Consciousness**
- 1 day dedicated from that new level developing Higher capabilities in **Value Creation & Value Co-Creation**
- 1 day dedicated to **Orchestration Value**, exchanging value with **Others** and the overall **impact** into the collective in the long run.

3 days dedicated to SelfCare, built Safety, build boundaries, create and hold a space to experience a stillness within, a sacred pause that Forges our Power of Presence.

Call in during these **3 days the stillness** of the Quantum Field to Upgrade our Processing Equipment, our Quantum Processors for higher capacity & capabilities.

This cannot be done in the dynamic of everyday.

Your skills set need to be unraveled and valorised, you are required to be more adaptable and step more into your genius & brilliance around what you are going to do next.

You get the strength to follow unconventional paths (that is where Growths happen), breaking free from traditional personal expectations.

Set yourself up for experiencing your daily life in a whole new way, as Growing takes you out of your comfort zones, takes you to see things in a whole different light and to be ready to move on the sudden changes.

Living deliberately isn't about planning everything but being definite that every small moment is a succession of moments and it is all we have.

Direct your future with Sovereignty as it is composed with lots of now's.

Master your power of Presence with Purpose.

Paula Teixeira

www.paulateixeira.com